

# WE'VE GOT YOU COVERED



**Tama Canada Ltd.**

1480 Sandhill Dr. - Unit 9B, Ancaster, ON, L9G 4V5

Ph: (905) 639-4555 Fax: (905) 639-8255 Toll Free: 1-877-690-4442

sales@tamacanada.ca www.tamacanada.ca

**“ They know what I need,  
because they’re farmers too.**

Tama has a unique mix of agricultural experience and manufacturing expertise. Tama’s products for crop packaging are made to run reliably and consistently – every time. As farmers ourselves, we understand why this is critical for you.

Our ability to identify and support the needs of our customers have enabled Tama to become the world’s leading supplier of Netwraps and Twines.



## **YOUR SUCCESS IS OUR GOAL**

We aim to bring a benefit to your business, increase your baler output and provide assistance if needed.

Tama Assist is your dedicated support network before, during and after the season.

**WE’VE GOT YOU COVERED.**

**SERVICE : KNOWLEDGE : TRAINING**

# TamaNet™

## with TamaTec+™ Technology

- Reliable and consistent. For a trouble-free baling experience – every time.
- Edge to Edge™ Technology ‘inside’ – to allow full bale coverage and total crop protection.
- Zebra System™ A clear Left-Right indicator for easy and correct loading of the roll into the baler every time. Plus, at feeding time, user can quickly see which direction to unroll the bale.
- Red End Warning. Indicates to the operator that the end of the roll is approaching.
- Guaranteed Length. Every roll contains at least the guaranteed stated length.
- Carry Handles. Provides easier handling.
- Edge Guards. Protect roll from damage.
- Unique ID Number. “Unique passport” for each roll, enabling full production details to be traced.
- Anti-laddering



	Product	Width	Length
Good	Ecobull Netwrap	48"	3,000m / 9,840'
	Ecobull Netwrap	48"	3,600m / 11,800'
	Ecobull Netwrap	64"	2,130m / 7,000'
	Ecobull Netwrap	64"	2,680m / 8,800'
Better	BaleBind Netwrap	48"	3,000m / 9,840'
	BaleBind Netwrap	51"	3,000m / 9,840'
	BaleBind Netwrap	64"	2,130m / 7,000'
	BaleBind Netwrap	67"	2,130m / 7,000'
Best	TamaNet Edge to Edge TT+	48"	3,000m / 9,840'
	TamaNet Edge to Edge TT+	48"	3,800m / 12,500'
	TamaNet Edge to Edge TT+	51"	3,000m / 9,840'
	TamaNet Edge to Edge TT+	51"	3500m / 11,500'
	TamaNet Edge to Edge TT+	64"	2160m / 7,000'
	TamaNet Edge to Edge TT+	64"	2750m / 9,000'
	TamaNet Edge to Edge TT+	67"	2160m / 7,000'
	TamaNet Edge to Edge TT+	67"	2500m / 8,500'

## Good, Better, Best - Our Netwrap Range

### Good EcoBull



- UV protection
- Left/Right indication on cardboard core
- Red End warning
- Less waste with longer roll lengths (Up to 40% waste savings)
- Roll carry handles – for easier rolls handling

### Better BaleBind



- UV protection
- Left/Right indication with orange stripes to aid correct roll loading and to help with bale un-rolling when feeding
- Red End warning
- Guaranteed length - Every roll manufactured contains the GUARANTEED stated length, not simply a “plus-or-minus” average
- Less waste with longer roll lengths (Up to 40% waste savings)
- Roll carry handles – for easier rolls handling

### Best TamaNet



#### Reliability

- No broken bales
- Less downtime

#### Consistency

- Consistent performance
- Every bale perfect
- Remove the uncertainty from your baling

#### Plus Technology

- Improved special material mix.
- A special blend of advanced raw materials in a unique manufacturing process, developed exclusively by Tama.
- Zebra System - Asymmetrical striping to aid correct roll loading and to help with bale un-rolling when feeding

#### Universal performance

- Tested to ensure total performance in all round balers
- **Designed to work in all crop conditions**

#### Length choice

- Guaranteed length - Every roll manufactured contains the GUARANTEED stated length, not simply a “plus-or-minus” average
- Allow you, the customer, to select the right product for your needs
- Longer roll length provides better cost per bale
- Less waste with longer roll lengths

# TamaTwine+ Large Square Baler twine

TamaTwine+ for Large Square Bales comes in a range of products designed to suit your needs. Choose the strongest twine for your most demanding conditions, or opt for the longer ball length. Whichever twine you choose, you can count on high performance that will not let you down.



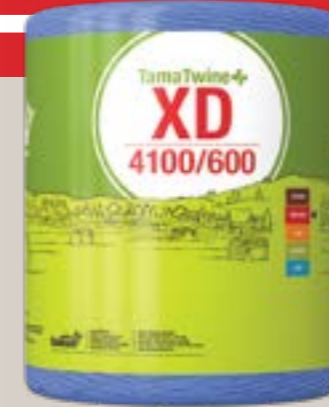
## Tama LSB 4400/450

The best performing option for all crops and balers where high density is required. Use it for silage and for high density hay and straw bales.



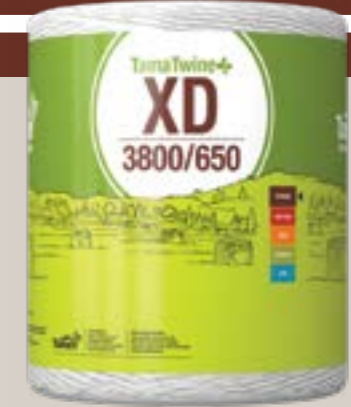
## Tama LSB 4300/550

A longer length option for High Density balers in springy crops such as grasses, straw and cornstalks.



## Tama XD 4100/600

For High Density balers where ultimate performance is required. Use it for straw in conditions of extreme density or high temperatures, short straw, and corn stalks.



## Tama XD 3800/650

For High Density balers in the most extreme conditions of high temperatures and density. Ultimate performance in short straw or cornstalks.

## TamaTwine+ Features:



LONGER LENGTH BALLS => LESS CHANGES => HIGHER OUTPUT  
Extra length for less ball changes, less waste and higher efficiency.



Unrivalled knot performance, flexible and strong for 100% reliable tight knots on your bales.



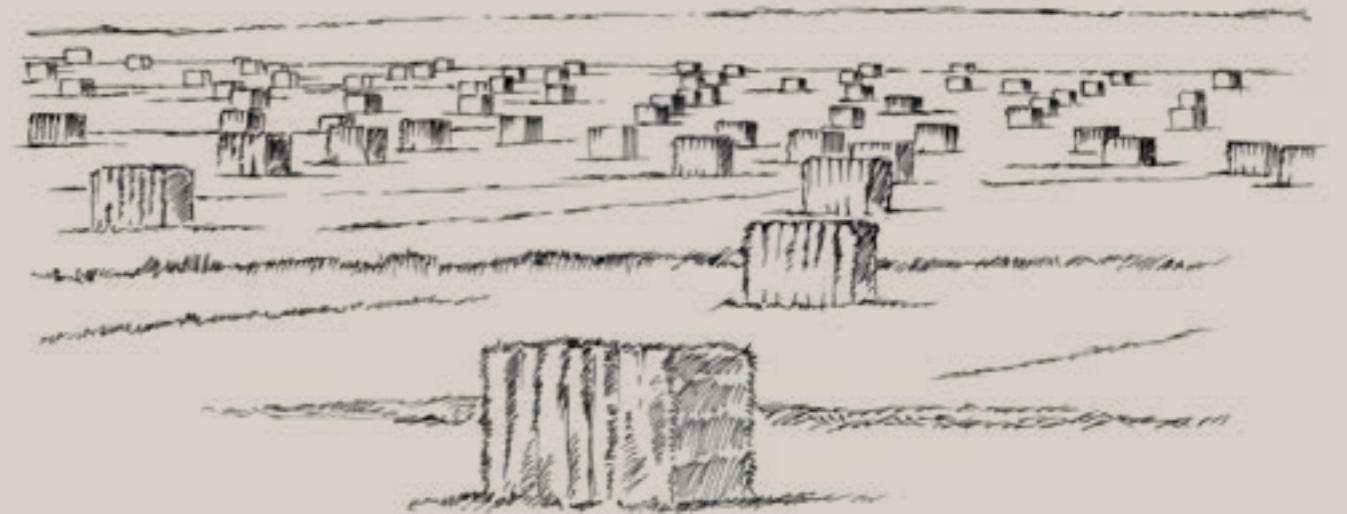
Uniform ball shape to ensure trouble-free running in the baler.



The only Big Baler twine range fully validated by ALL THE MAJOR BALER PRODUCERS.



Special UV light inhibitors to withstand intense exposure over long periods.



# Polypropylene Baler Twine

## For square and round bales



### Features include:

- Twine runs trouble-free in baler
- Always uniform consistency
- Withstands "drop shock"
- Contains special UV light inhibitors which allow it to withstand intense exposure to sunlight over long periods
- No taste, smell, oil, or food value to attract rodents

Brand	Bale Type	Length	Knot Strength	Spools/pallet
CLAAS Quadotex	Large Square	3,848 feet	617	36
Tama XD	Large Square	3,800 feet	650	36
Tama XD	Large Square	4,100 feet	600	48
Tama LSB	Large Square	4,300 feet	550	36
Tama LSB	Large Square	4,400 feet	450	48
BALEBIND	Large Square	4,000 feet	550	48
BALEBIND	Large Square	4,000 feet	500	48
BALEBIND	Large Square	4,000 feet	450	48
BALEBIND	Small Square	9,600 feet	210	40
BALEBIND	Small Square	12,000 feet	190	40
BALEBIND	Small Square	9,000 feet	180	40
BALEBIND	Small Square	9,600 feet	170	60
BALEBIND	Small Square	7,200 feet	170	60
BALEBIND	Small Square	9,000 feet	140	60
BALEBIND	Round Bales	40,000 feet	110	40
BALEBIND	Round Bales	28,000 feet	110	40

# Sisal Twine

## Brazilian - Sisal twine for round or square bales

Our Brazilian line represents premium-quality sisal twines by COSIBRA, Brazil's most experienced twine manufacturer. Brazil's extra-long and strong fibers ensure uniform knotless twines for both square and round bales. Each bale is fully treated to resist rodents and insects.

### Features include:

- Extra-long fibers for consistent trouble-free baling.
- High tensile and knot strength.
- Specially treated to resist rodents and insects.  
(Also available untreated for silage)
- Biodegradable.



Bale Type	Length	Tensile Strength	Spools/pallet
Small Square	7,200 feet	425 lbs	50
Small Square	9,000 feet	350 lbs	50
Round Bales	16,000 feet	170 lbs	50

**Clearfield™** - As an alternative to sisal twine, Tama Canada also offers Clearfield. The advantage of Clearfield Twine is a combination of sisal twine's degradability and plastic twine's durability.



Bale Type	Length	Tensile Strength	Spools/pallet
Round Bales	20,000 feet	110 lbs	80



# Stretchwrap

## SUNFILM Silage Film



### Silage Film for both Square and Round Bales

Our Silage Film is designed for climates from the hot Florida summers to the cold Canadian winters. This product is produced with the rigorous specifications geared to the agricultural industry. Every roll that is used will perform trouble free on any properly adjusted square or round bale wrapping machine on the market.

#### Features include:

- Reduced storage and operational cost (no need for inside storage).
- Excellent puncture, abrasion and tear resistance for outdoor storage.
- Specifically treated to resist ultra violet light degradation for up to one year.
- Reflective white film to reduce heat build up, which avoids loss of quality feed
- Excellent cling - wrap bales air tight for the duration of storage.
- Prevents attacks by bugs, mold, and harmful bacteria.

#### Recommendations for best results:

- Film should be pre stretched to %60-%55.
- Bales are wrapped with a %50 overwrap and minimum of four layers (2x2).
- Wrap Bales at a %60-%50 moisture content for best results.

### Sunfilm Film (Round Bales)

Width	Length	Thickness	Colour	Rolls/Pallet
500mm (20")	1,800m (6000')	1.0 mil	White*	24
750mm (30")	1,500m (5000')	1.0 mil	White/Green*	24

### Sunfilm Gold II (Square and Round Bales)

Width	Length	Thickness	Colour	Rolls/Pallet
750mm (30")	1,500m (5000')	6 Layer	White/Green*	24

\*Black is available upon request.

### In-Line Wrapping — Endcaps

Size	Endcaps/Box
93"x72"	20
110"x72"	20

Other sizes available.



## Aspla Power Ultra & SuperGrass Silage Film

### Silage Film for both Square and Round Bales

Power Ultra® agri-stretch film was developed to provide exceptional performance when wrapping bales. Rolls have 20% more meters, compared to a standard 750 mm film (1,800 m as opposed to the traditional 1,500 m). Power Ultra's additional length allows wrapping of up to 6 more bales per roll, optimizing and reducing the wrapping costs for the operator by 20%. Time is also saved, because less rolls have to be changed during the day, which means less machine stops. Due to its 20% cost benefit, Power Ultra® is the stretch film offering the best value for money in the market.

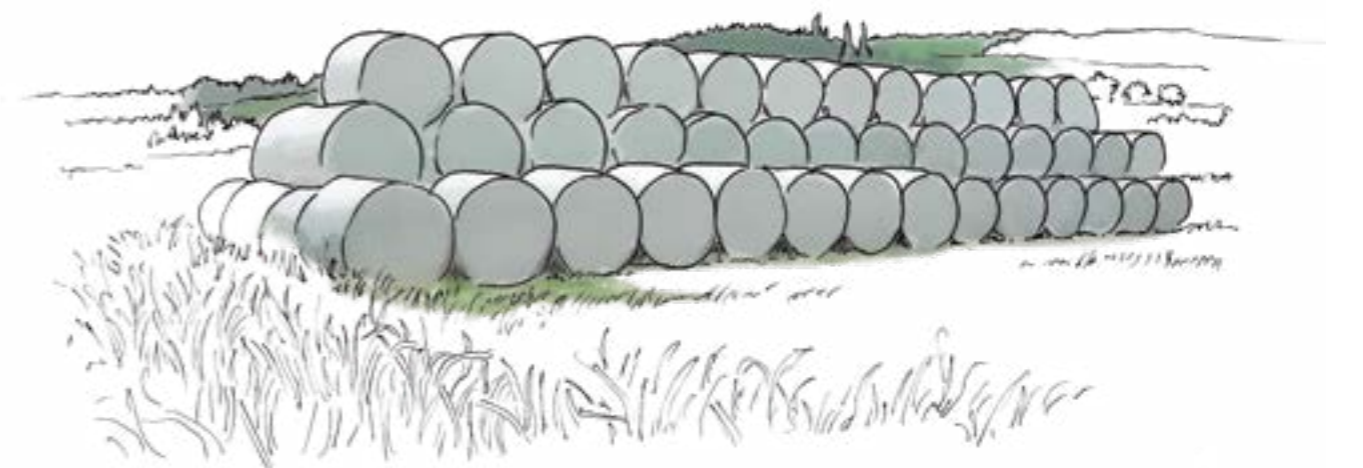


### Aspla film for Round Bales

Model	Width	Length	Thickness	Colour	Rolls/Pallet
Power Ultra®	750mm (30")	1,800m (6000')	5 Layers	White/Green	40

### Aspla film for Large Square Bales

Model	Width	Length	Thickness	Colour	Rolls/Pallet
SuperGrass®	750mm (30")	1,500m (5000')	5 Layers	White/Green	40





**Tama Canada Ltd-Ltée**

1480 Sandhill Dr. - Unit 9B, Ancaster, ON, L9G 4V5

Ph: (905) 639-4555 Fax: (905) 639-8255 Toll Free: 1-877-690-4442

sales@tamacanada.ca www.tamacanada.ca